

Datamining

Knowledge Discovery & Datamining Two-Day Course 23rd - 24th July 2009 University of East Anglia, Norwich

Knowledge Discovery and Datamining (KDD) is the non-trivial process of identifying valid, novel, potentially useful and ultimately understandable patterns in data.

Target Audience

The two-day course is suitable for those wishing to gain a greater understanding of the stages of KDD and the key techniques used in data mining.

Course Objectives

At the end of the course, you will be able to:

- Understand the concepts of knowledge discovery and datamining
- Understand the stages required in a typical project
- Identify potential projects within your organisation
- Know where KDD projects have been carried out and some of the benefits
- Identify the resources required to carry out each type of KDD project
- Understand and use some key datamining techniques

There will be practical sessions using commercial datamining software packages illustrating their suitability for different types of project. The course is structured to provide time to discuss potential datamining projects with other delegates and our consultants.

Day One

Introduction to KDD

Refreshments

Overview of KDD applications

KDD Methodologies

Lunch

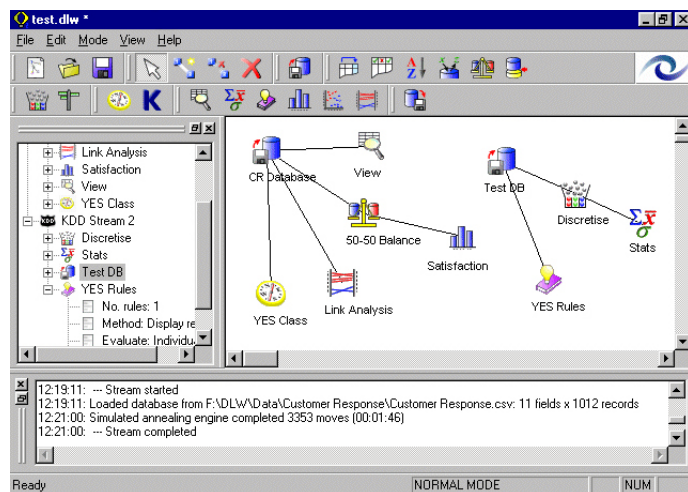
Practical Session One

Refreshments

Data Preparation

The cost of this two day course is £950 which includes course materials, delivery, lunch and refreshments.

For more information on SYS Consulting Ltd including our areas of expertise, recent projects, or to book a place on this two day course call 01603 591163 or visit our website.



Day Two

Tree Induction

Refreshments

Rule Induction

Clustering

Lunch

Practical Session Two

Refreshments

Practical Session Three & Close